

Celebrity

New wheat with extraordinary characteristics!



Variety characteristic

- › Early variety
- › Winter wheat
- › High yield potential >10 t/ha
- › High hectoliter 78 - 80 kg/hL
- › Excellent milling characteristics

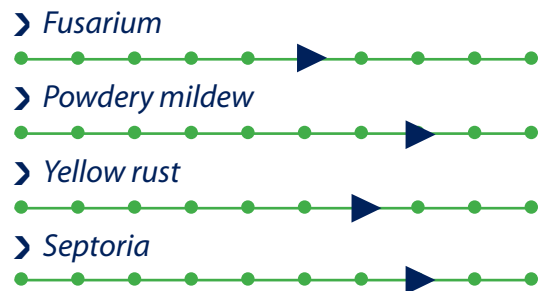


Agro-technical characteristics

- › Sowing rate: 450 - 500 germinating grains/m²
- › Optimum sowing time: October 10 - 25
- › Height: short to medium height
- › Ear type: not awned



Disease resistance



Characteristics

- › B1 quality
- › Protein: 12,5 %
- › Moist gluten: 26 - 28 %
- › Hagberg300 - 320 s
- › W: 150 - 180
- › P/L: 0,6 - 1

